

Spellbound



Quilt designed by Jean Ann Wright Finished size: 56" x 69"

Fabrics by **Renée Nanneman**



makower uk

1384 Broadway
New York, NY 10018
(800) 223-5678

www.andoverfabrics.com

Spellbound Quilt

Introducing Andover Fabrics new collection: Spellbound by Renee Nannemann
Quilt designed by Jean Ann Wright

Fabric Requirements

	Yardage	Orange	Yellow
Fabric A wide center panel	1¾ yards	5125-O	5125-Y
Fabric B pumpkin print strips	1¾ yards	5126-P	5126-Y
Fabric C striped strips, pieced borders	1 yard	5129-O	5129-K
Fabric D pumpkin blocks	½ yard	5130-O	5127-O
Fabric E* pumpkin blocks, binding	7⁄8 yards	4268-K	4268-K
Fabric F pumpkin blocks	1⁄8 yards	5127-Y	5127-Y
Fabric G bat blocks	5⁄8 yard	3818-O	3818-Y
Fabric H bat blocks	5⁄8 yard	5127-K	5127-K
Fabric I solid and pieced borders	1⅛ yards	5128-K	5128-K
Backing	3½ yards	5127-Y	5127-Y

*includes binding

Quilt finishes 59" x 69"
7 pumpkin blocks: 8" x 8"
7 bat blocks: 8" x 8"

Boo! Make Halloween even more special with a cool quilt to bring out every year when the frost is on the pumpkin. Children of all ages will love the fun, not-scary prints. We'll show you some tricks that make piecing the borders, pumpkins, and bats a real treat.

Cutting Directions

Note: Measurements for borders are exact lengths required plus ¼" seam allowances. WOF designates the width of fabric from selvedge to selvedge (approximately 42" wide).

Fabric A From the length of fabric, cut (1) center panel 21½" x 56½", centering the panel on the wide print stripe

Fabric B From the length of the fabric, cut (2) strips 4½" x 56½", centering the strips on the pumpkin motifs

Fabric C Cut 5 strips 2½" x WOF. Piece these strips and cut (3) strips 56½" long
For the pieced borders, cut (28) squares 4½" x 4½"

Fabric D For the pumpkin blocks cut (7) rectangles 6½" x 8½"

Fabric E Cut 7 strips 2½" x WOF for binding
For the pumpkin blocks, cut (1) strip 4" x WOF. Cut this strip into (2) 20" lengths
Cut (28) squares 2½" x 2½"

Fabric F Cut 1 strip 1½" x 20"

Fabric G Cut 1 strip 3½" x 12"
Cut (7) rectangles 3½" x 4½"
Cut (7) squares 4½" x 4½"
Cut (14) squares 3" x 3"

Fabric H Cut (14) squares 4½" x 4½"
Cut (28) rectangles 2" x 3"
Cut 1 strip 1½" x 12"

Fabric I Cut 3 strips 3½" x WOF. Piece and cut into (2) side borders 56½" long
Cut 3 strips 3" x WOF. Piece and cut into (2) top and bottom borders 57½" long
For the pieced borders, cut 14 rectangles 4½" x 8½"

Backing Cut (2) panels WOF x 60", pieced to fit quilt top with 4" overlap

Making & Assembling the Quilt

1. Make the pumpkin blocks. Referring to diagram 1, sew the fabric F strip between the 3½" fabric E strips to make a band. Press the seam allowances toward the Es. With a rotary cutter and ruler, cut the band into (7) 2½" segments. These are the pumpkin stem units. Set them aside.
2. Referring to diagram 2, align a 2½" x 2½" fabric E square right sides together with a corner of a fabric D rectangle. Mark the E diagonally as shown and stitch on the drawn line. Trim excess fabric, leaving a ¼" seam allowance. Press the E corner open. Repeat for all corners of the D to make the pumpkin.
3. Referring to the pumpkin block diagram, join a pumpkin stem unit to the pumpkin. Make 7.
4. Make the bat blocks. Start with the head unit. In a similar manner as in step 1, sew the 1½" fabric H strip to the 3½" fabric G strip. Press the seam allowance toward the H. Cut the resulting band into (7) 1½" segments. Referring to diagram 3, join (1) segment to a 3½" x 4½" G rectangle. Set it aside.
5. Make the wing units. Referring to diagram 3, join (2) fabric H rectangles to adjacent sides of a fabric G square. Place this unit right sides together with a 4½" x 4½" H square. Sew diagonally across the H and trim the excess fabric, leaving a ¼" seam allowance. Press the H open. Make 2.
6. Referring to the bat block diagram, join the 2 wing units, a head unit, and (1) 4½" x 4½" fabric G square to make a bat block. Make 7.
7. Referring to the quilt diagram, join the pumpkin and bat blocks into 2 vertical rows, noting the orientation of the bat blocks. Matching seams and ends, join the rows.
8. Referring to the quilt assembly and matching centers and ends, join the pumpkin/bat unit to the remaining A, B, and C strips as shown. Press after each addition.
9. Matching centers and ends, sew the fabric I side borders to the sides of the quilt. Similarly, sew the remaining fabric I borders to the top and bottom of the quilt. Press. Measure the quilt from side to side. Carefully trim the sides of the quilt so it measures exactly 56½" across.
10. Make the flying geese border units. Referring to Diagram 4, align (1) 4½" x 4½" fabric C square right sides together with the end of a 4½" x 8½" fabric I rectangle. Draw a line on the square from corner to corner as shown. Stitch on the drawn line and trim excess fabric, leaving ¼" seam allowance. Press the triangle open. Repeat for the other end of the rectangle. Make 14 flying geese blocks like this.



Diagram 1

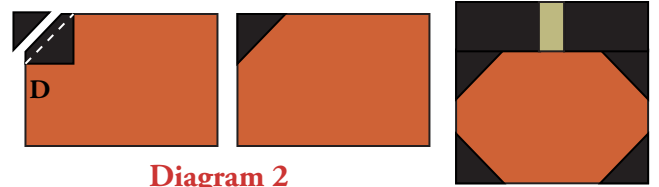
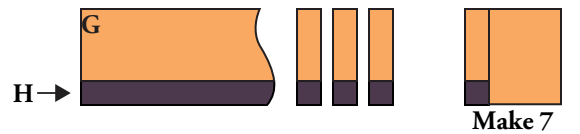
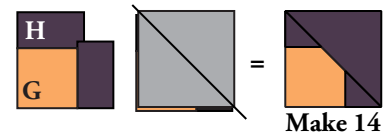


Diagram 2

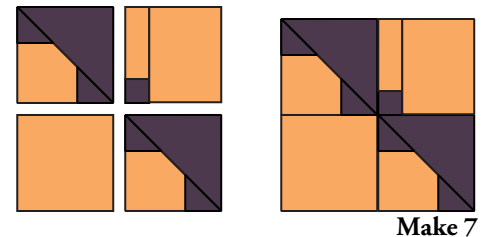
Make 7
Pumpkin Block



Make 7



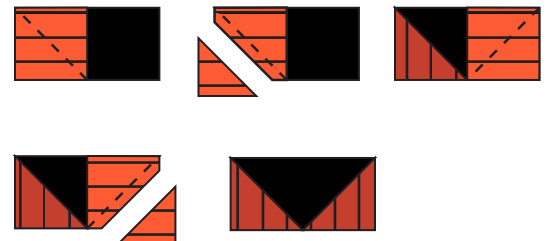
Make 14



Make 7

Bat Block

Diagram 3



Make 14

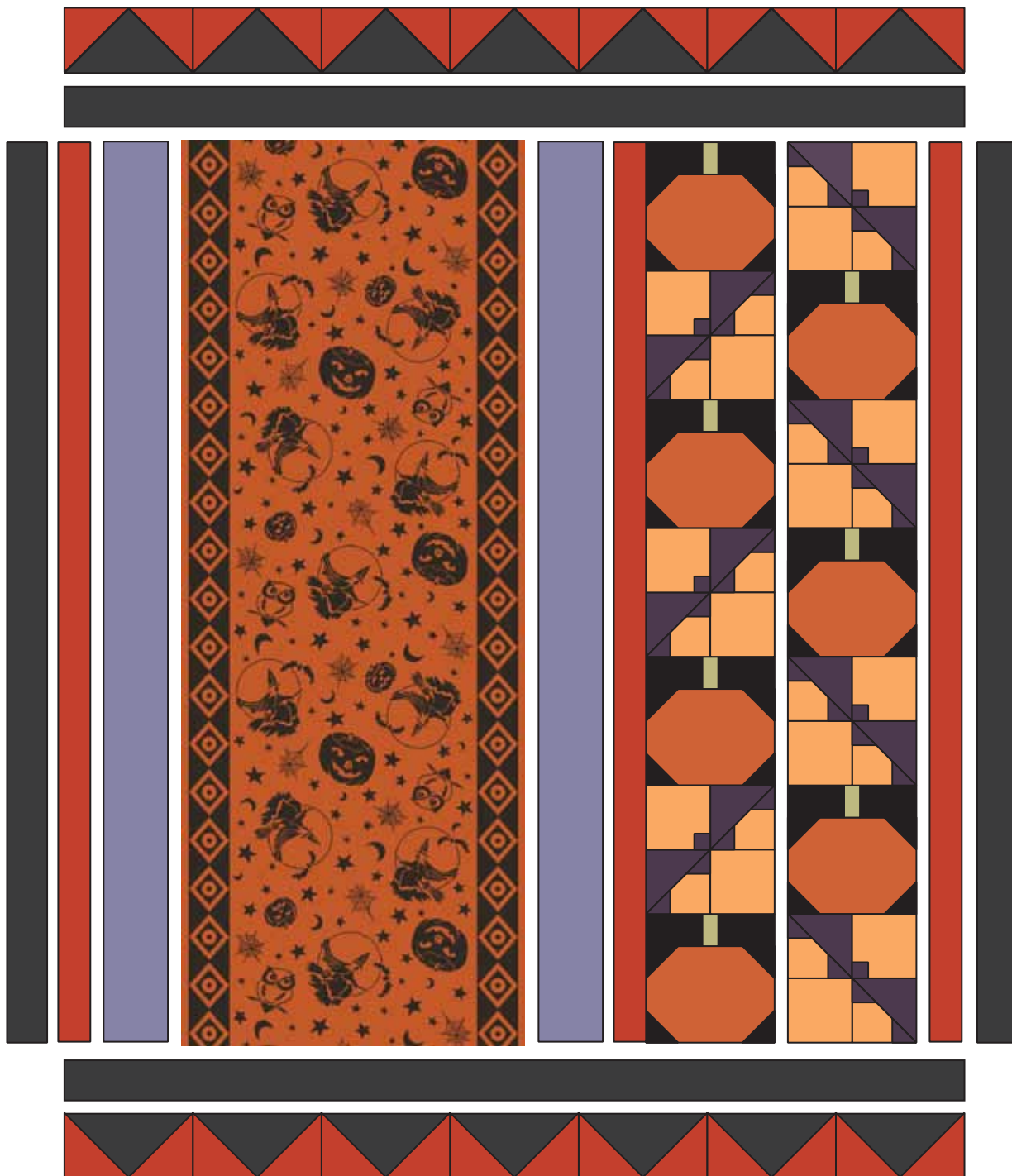
Diagram 4

Spellbound Quilt

11. Referring to the quilt diagram, join (7) flying geese units to make the top border strip. Matching centers and ends and paying attention to the orientation of the geese, join the border to the top of the quilt.
12. Repeat with the remaining flying geese units for the bottom border.

Finishing the Quilt

13. Layer quilt with batting and backing. Quilt in the ditch around borders and block patches. Quilt around the printed motifs in the center panel and around the pumpkin heads in fabric B. Bind to finish the quilt.



Quilt Diagram

Spellbound

by Renée Nanneman

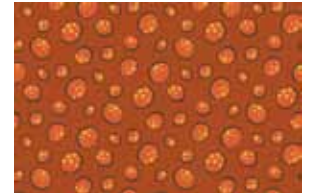


makower uk®

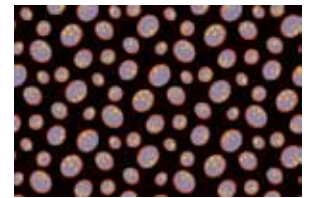


5127-Y

5125-Y



5127-O



5127-K

5125-O

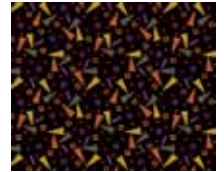


5126-Y

5126-P



5128-Y



5128-K



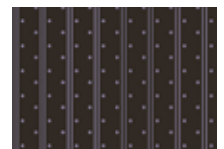
5129-O



5129-K



5130-O



5130-K



5126-O

5126-K



3818-O



3818-Y



4066-O



4264-L0



4268-LP



4268-K

*Indicates fabric used in quilt pattern. Fabrics shown are 20% of actual size.
 Free Pattern Download Available at www.andoverfabrics.com
 11/18/10